

# NUANCE

The experience speaks for itself™

## DATASHEET

### Nuance SafeCom Smart Printing™ for Xerox MFPs

#### The benefits for your organization:

##### Company

- Reduce print costs by 30%
- Protect output and devices
- Reduce waste
- Sustainable print services

##### Employees

- Print safely anytime, anywhere
- Go to the printer of your choice
- Avoid lost documents
- Improve mobility

##### IT

- Simplify print infrastructure
- Improve helpdesk efficiency
- Free up IT resources
- Centralize administration

##### Procurement

- Centralize cost control
- Accurate cost allocation
- Optimize print services
- Avoid unauthorized use

#### OPTIMIZE PRINT SERVICES AND IMPROVE DOCUMENT SECURITY

Nuance SafeCom Go is designed to help companies control and optimize print services and document security. It is easy to install and use, is built with optional modules to match and grow with your business, and is highly configurable to function seamlessly with your company's existing devices, networks and systems.

SafeCom Go integrates secure printing and document accounting on supported multifunctional devices and printers. Users enter their identification code directly on the touch screen, or authenticate using access cards and a SafeCom ID reader. SafeCom Go enables SafeCom Smart Printing™ functionality that puts you in control of print, copy, scan, fax and email activities and workflows by employing

- Central Administration
- Document Accounting
- Secure Printing
- Policy Enforcement

#### SOLUTION OVERVIEW

SafeCom Go provides secure printing and access control – users send their print and then authenticate at any SafeCom-enabled network MFP to retrieve it. The SafeCom Server enables central administration, document accounting and policy enforcement. Authentication using cards requires an ID Device.



#### HOW IT WORKS FOR THE USERS

Users log in at the device, and select print, copy, scan, e-mail or fax on the display. If print, a list of the documents saved on the SafeCom Server is presented.

## Technical details

### SafeCom Go Configuration

SafeCom Go includes the SafeCom Advanced Server installed on a Windows server. Users authenticate using an alphanumeric code. Authentication by card requires a SafeCom Reader connected via external USB port or a serial port.

Please see SafeCom website [www.nuance.com/safecom](http://www.nuance.com/safecom) for required firmware version.

### Supported Devices

Support for most Xerox MFPs, but please check [www.nuance.com/go/safecom-supported-devices](http://www.nuance.com/go/safecom-supported-devices) for exact information on your Xerox MFPs.

### Authentication methods

Users authenticate at the device via user code, card or card and PIN-code. On MFPs it is also possible to use the Windows login.

### SafeCom Modules

- Pull Print and Encryption
- Tracking and Reports
  - Rule Based Print
  - Pay
  - Client Billing

All modules are licensed per device

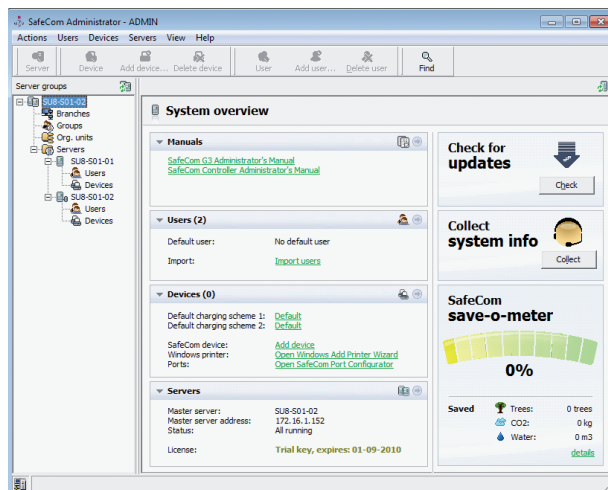
### Available SafeCom Identification Technologies

- |              |               |
|--------------|---------------|
| • AWID       | • iClass      |
| • Barcode    | • Indala      |
| • Casi Rusco | • loProx      |
| • Cotag      | • Legic       |
| • EM         | • Mag. Reader |
| • Felica     | • Mifare      |
| • HID        | • NexWatch    |

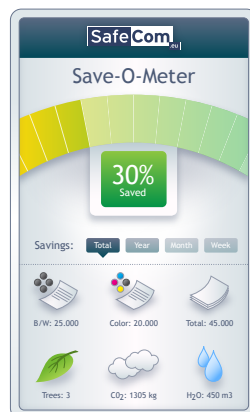
For more information visit  
[www.nuance.com/safecom](http://www.nuance.com/safecom)

## SAFECOM ADMINISTRATOR - CENTRAL ADMINISTRATION AND COST CONTROL

The SafeCom Administrator allows your IT staff to centrally manage and control the entire printing environment, i.e., its users, printers, and MFPs. This allows your staff to support all the company's print queues, remove cancelled jobs or troubleshoot remote sites from their central location. In addition they can set up rules and policies to reduce waste.



Many operations can be set for automatic processing, such as deletion of old jobs and status reporting. Companies can consolidate their many printer queues, or even create a single queue for all printers, thereby simplifying administration and support and raising help-desk efficiency.



### SAFECOM SAVE-O-METER

The SafeCom Save-O-Meter gives an instant overview of environmental savings and saved consumables.

The SafeCom Save-O-Meter widget can be displayed on the company website to show employees how much they save with SafeCom.

### SYSTEM REQUIREMENTS

- Server:
  - Windows 2008/2008 R2 and 2003 SP2 (both 32-bit and 64-bit)
  - Virtualization software, such as VMware and Microsoft Virtual Server, is supported as long as it supports Windows.
  - 1.4 GHz CPU (recommended 2 GHz or faster) and 2 GB RAM or greater. 5 GB of free disk space or more depending on print volume.
- Database
  - Microsoft SQL Server 2008 R2 Express is distributed with the software and requires Microsoft Net Framework 3.5 SP1 and Windows Installer 4.5. In a SafeCom multi server installation the master server must run Microsoft SQL Server 2008 or 2005.
- Client
  - Windows 7, Windows Vista, Windows XP SP2, 2008, 2003, and clients running Citrix and Windows Terminal Service.
  - 1 GHz CPU and 1 GB RAM or greater (minimum 2 GB RAM if 64-bit).
- Web Interface
  - Internet Information Service (IIS) version 7.0, 6.0 or 5.1.